



OFFERS OVER £350,000

Sanderling Way, Forest Town,
Mansfield,

Welcome to **BuckleyBrown**, where every home is carefully presented, so you can explore with clarity and confidence.

BuckleyBrown
ESTATE AGENTS

"A fantastically presented four-bedroom detached home located in one of the area's most sought-after locations. Boasting generous living space and finished to a high standard throughout, this superb property is sure to attract strong interest and won't be available for long."

Tim, Valuer



MOVE STRAIGHT IN AND MAKE YOURSELF AT HOME.

Presented to an exceptional standard, offering a seamless move for the successful purchaser

From the moment you arrive, this well-presented home creates a positive first impression. Inside, the property boasts generous living accommodation, well-proportioned bedrooms and a beautifully landscaped garden, all combining to create a stunningly presented home that is ready to be enjoyed from day one.



THE FINER DETAILS

Step inside and you are immediately welcomed by a stunning four-bedroom detached home that has been thoughtfully modernised and beautifully presented throughout.

Offering generous living accommodation perfectly suited to modern family life, the property provides a superb balance of space, comfort and style, with well-proportioned rooms and a layout that flows effortlessly from one area to the next. Tastefully decorated throughout and finished to a high standard, this impressive home offers a warm and inviting feel from the moment you enter. Complemented by a fantastic garden space, this property presents an excellent opportunity for those seeking a stylish, move-in-ready home that combines contemporary living with practical family accommodation.

The ground floor begins with a lovely welcoming hallway running through the centre of the home, providing access to the main living areas. To the front sits a stylish lounge featuring a media wall, built in fire place and attractive bay window, creating a comfortable and inviting space to relax. To the rear, the impressive kitchen and dining area forms the heart of the home, fitted with modern cabinetry, quality appliances and a charming box window with French doors opening out into the garden. A useful utility room sits conveniently to the side of the kitchen with a further door leading outside, while a ground floor WC with handy storage cupboard completes the accommodation.

The central staircase leads to the first floor where you will find four well-presented bedrooms, three of which benefit from built-in wardrobes, including the master bedroom which also enjoys the added luxury of an en-suite shower room. The family bathroom is fitted with a stylish three-piece suite including a freestanding bath, while a useful storage cupboard on the landing adds further practicality to this well-designed home.

Externally, the property continues to impress with a beautifully designed garden space, featuring a paved seating area/patio ideal for entertaining and relaxing, along with a well-maintained lawn creating a fantastic outdoor setting. To the front, the property benefits from neatly presented off-road parking and an integrated garage, providing excellent practicality and storage. This completes the attractive and well-kept appearance of this exceptional family home.





BuckleyBrown
ESTATE AGENTS







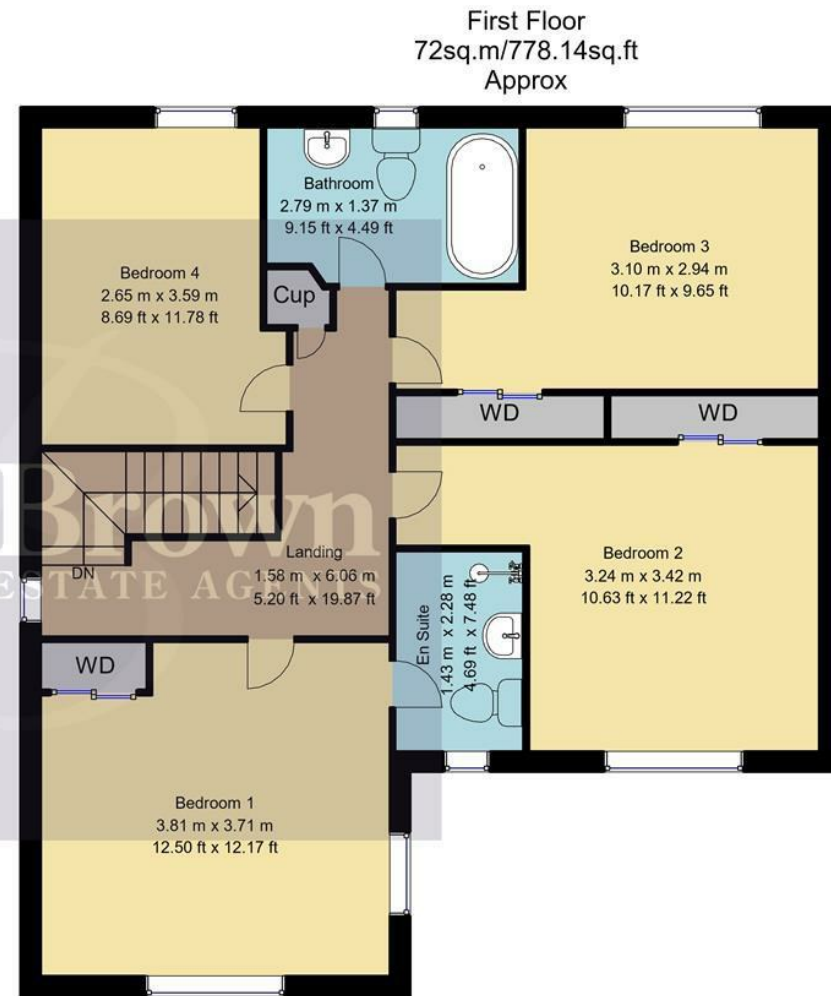
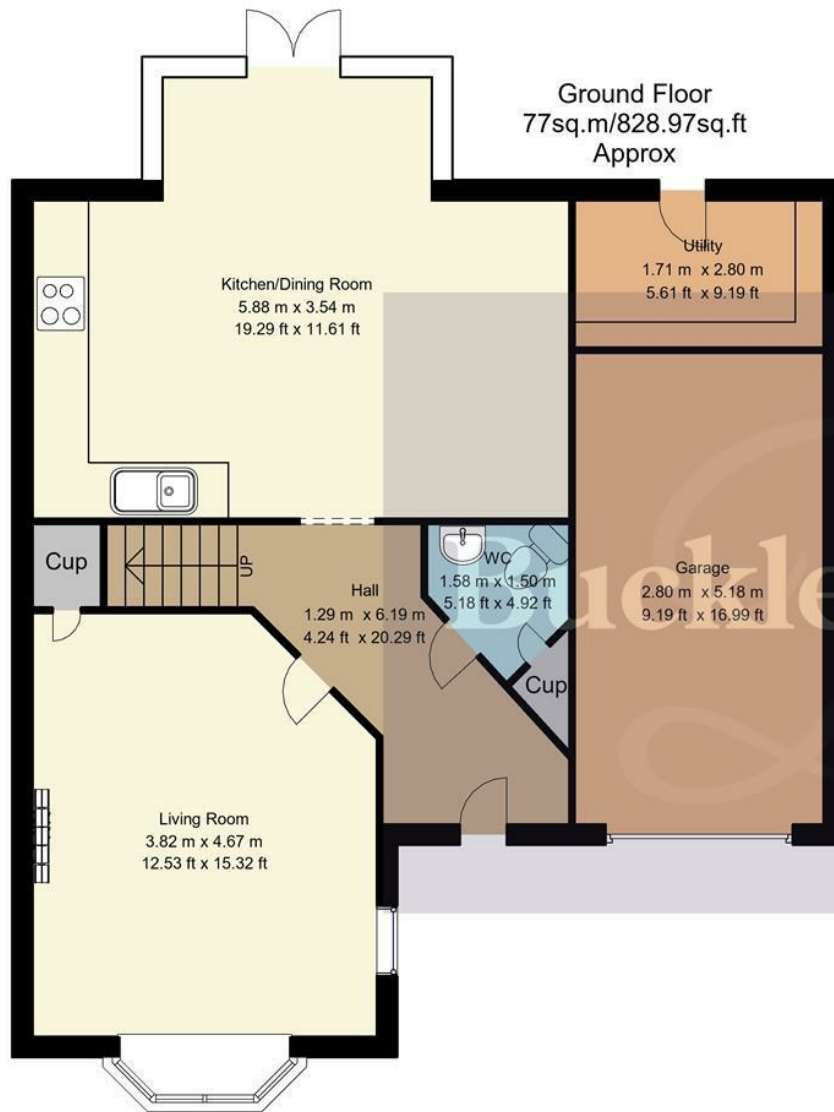
LIFE IN FOREST TOWN

Forest Town is a popular and established residential area of Mansfield, offering a great balance of family-friendly living, everyday convenience and excellent access to the wider Nottinghamshire area. With a welcoming community feel, a range of local amenities and green spaces nearby, it provides an appealing setting for families, professionals and those looking to put down roots.

The area benefits from a selection of local schools, shops, leisure facilities and outdoor spaces, while being perfectly placed for enjoying the wider countryside, including the nearby Sherwood Forest and surrounding woodland areas, ideal for walks, cycling and family days out. Mansfield itself offers a good range of shopping, dining and leisure facilities, providing everything needed for day-to-day life.

For commuters, Forest Town is ideally positioned with convenient road links towards Mansfield, Nottingham and the wider East Midlands, with access to major routes including the M1 nearby. The area also benefits from local bus connections, making travel throughout the region straightforward.





Whilst every attempt has been made to ensure the accuracy of the floor plan contained here, no responsibility is taken for incorrect measurements of doors, windows, appliances and room or any error, omission or misstatement. Exterior and interior walls are drawn to scale based on interior measurements. Any figure given is for initial guidance only and should not be relied on as basis of valuation. These plans are for marketing purposes only and should be used as such by any prospective purchase. Specially no guarantee is should not be relied on as a basis of valuation. These plans are for marketing purposes only and should be used as such by any prospective purchase. Specifically no guarantee is given on the total square footage of the property if quoted on this plan.

Key Features

Stunning four-bedroom detached family home

Stylish lounge with feature media wall and bay window

French doors opening onto the landscaped garden

Beautifully landscaped rear garden with patio and lawn

Off-road parking

Popular residential location

A great location for families and professionals alike

Approximate Size

1606 Sq. ft

Energy Performance Certificate (EPC)

Rating C

Council Tax Band D

BuckleyBrown
ESTATE AGENTS



These particulars are intended as a guide only and do not form part of any offer or contract. All descriptions, measurements, images and plans are provided for illustration purposes and should not be relied upon as statements of fact. Prospective purchasers should satisfy themselves as to the accuracy of the information. Buckley Brown Estate Agents accept no liability for any loss arising from reliance on these details.

© Buckley Brown Estate Agents 2026. All rights reserved.

Exceptional homes deserve
exceptional representation.

Let's Chat.

01623 633633

mansfield@buckleybrown.co.uk

buckleybrown.co.uk

BuckleyBrown
ESTATE AGENTS